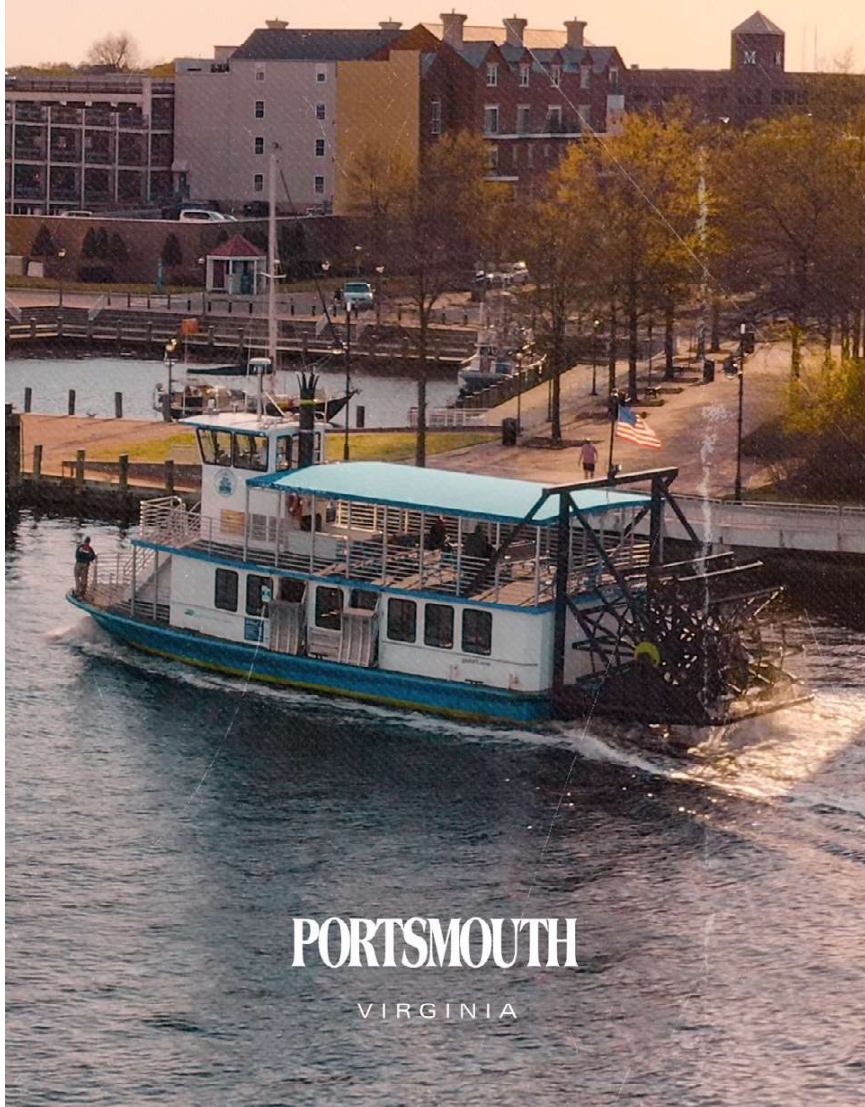


GO DIFFERENT

# Portsmouth Virginia

WELCOME TO VIRGINIA'S  
HISTORIC SEAPORT®



PORTSMOUTH  
VIRGINIA

CHILDREN'S MUSEUM  
OF VIRGINIA



## Time for fun? Go Different.

Things have always been a little different on our side of the water, and that's just the way we like it. We think you'll love it. Our charming seaport city has been welcoming visitors since 1752, so we're pretty good at it by now. History, food, nature, art, culture and entertainment? It's all here! You should be, too. Plan your visit today.

### **PORTSMOUTH WELCOME CENTER**

There's something for everyone to see and do in Portsmouth. Stop by our friendly High Street Welcome Center for brochures, directions, ideas, dining reservations, souvenirs and more.

OPEN DAILY 9 A.M TO 5 P.M.  
757-393-5111

# Museums

## **CHILDREN'S MUSEUM OF VIRGINIA**

Let your child's imagination run wild at Virginia's largest hands-on museum built just for kids. Two floors of interactive exhibits, a state-of-the-art planetarium, an antique toy and train exhibit, and dozens of special places to play, dream and discover.

221 HIGH STREET  
CHILDRENSMUSEUMVA.COM

## **PATH OF HISTORY**

See more than 250 years of history in a single square mile on this 3.5 mile self-guided walking tour of Olde Towne Portsmouth.

With some of the region's oldest standing homes and more than a few colorful tales, it's a history lover's dream. Whether you're up for the whole tour or just a portion, grab a tour map at the Portsmouth Welcome Center and explore our fascinating history.

## **PORTSMOUTH NAVAL SHIPYARD MUSEUM**

Explore over 250 years of seafaring history at the Portsmouth Naval Shipyard Museum. Discover Portsmouth's important role in our nation's military and maritime history from the earliest days of shipbuilding in the United States through present day.

2 HIGH STREET  
PORTSMOUTHNAVALSHIPYARDMUSEUM.COM

### **LIGHTSHIP PORTSMOUTH**

Climb aboard a National Historic Landmark filled with authentic artifacts, uniforms, and seafaring relics from a bygone era. Located right on the Olde Towne waterfront, Lightship *Portsmouth* is one of just a few surviving lightships of its kind.

LONDON & WATER STREET  
PORTSMOUTHNAVALSHIPYARDMUSEUM.COM

### **PORTSMOUTH COLORED COMMUNITY LIBRARY MUSEUM**

A nationally registered historic site, the Portsmouth Colored Community Library Museum celebrates the city's African American history inside a former library that served the city's African American community from 1945 until 1963. Exhibits include photographs and memorabilia, as well as books and journals from the original library.

904 ELM AVENUE  
PORTSVAAFRICANAMERICANHERITAGE.COM

### **THE JEWISH MUSEUM & CULTURAL CENTER**

The Jewish Museum & Cultural Center is the oldest synagogue in Portsmouth and serves as home to unique artifacts and exhibits from the history of the region's Jewish community, offering visitors a rare look at a surviving example of Eastern European Jewish Orthodoxy.

607 EFFINGHAM STREET  
JEWISHMUSEUMPORTSMOUTH.ORG



### **THE HILL HOUSE MUSEUM**

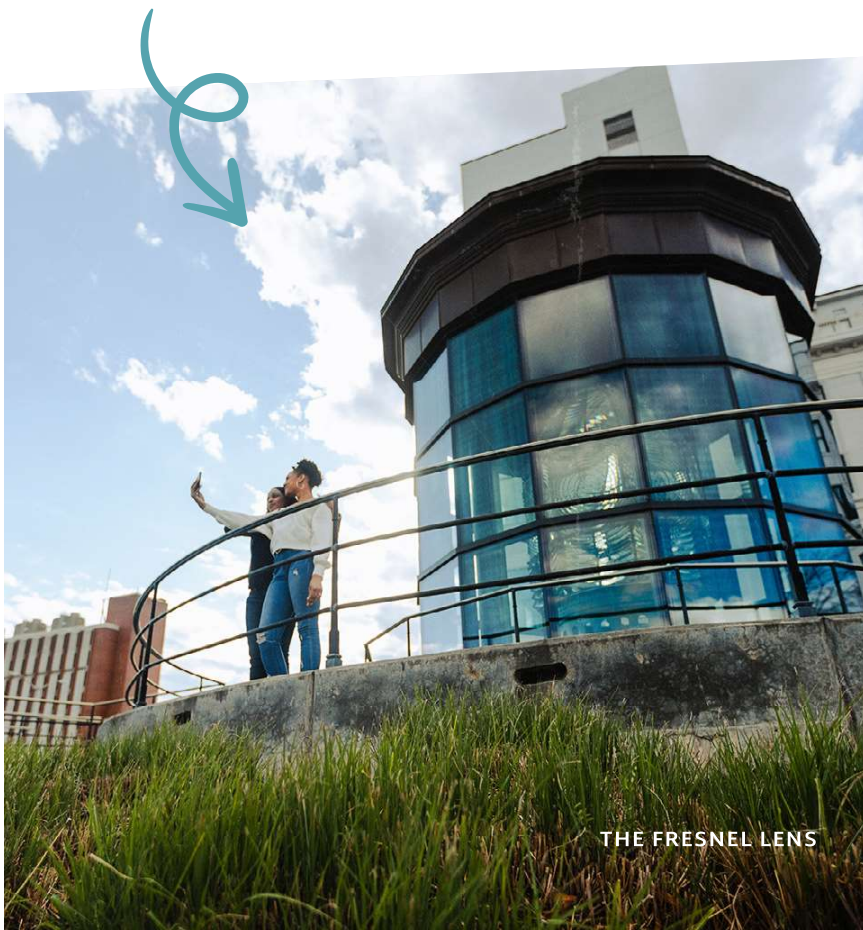
Furnished with original family heirlooms and belongings from the 19th and 20th centuries, the historic Hill House offers a fascinating look into Portsmouth's rich social history through the family who lived here for over 150 years.

221 NORTH STREET  
THEHILLHOUSEMUSEUM.ORG

### **THE FRESNEL LENS**

Once shining from atop the Hog Island Lighthouse on Virginia's Eastern Shore, this brilliantly restored 19th century Fresnel lens includes more than 250 dazzling prisms of optical glass. Sitting right on the sidewalk, it's the only lens of its kind not housed inside a museum.

FOOT OF HIGH STREET ON THE  
PORTSMOUTH SEAWALL



THE FRESNEL LENS

# Arts & Entertainment

## **PORTSMOUTH ART & CULTURAL CENTER**

Enjoy two spacious galleries of ever-changing exhibits, artist workshops, and demonstrations inside this historic 1846 Courthouse. Outside, enjoy live music and other programming in the tree-lined courtyard March - October.

420 HIGH STREET  
PORTSMOUTHARTCENTER.COM

## **THE COMMODORE THEATRE**

Go old-school with dinner and a movie at The Commodore, a beautifully restored 1945 Art Deco theater featuring first-run films on a 42 ft. screen. Don't forget to snap some pics under the classic marquee! Tesla charging station is available outside.

421 HIGH STREET  
COMMODORETHEATRE.COM

## **ATLANTIC UNION BANK PAVILION**

Catch the biggest names in music and entertainment at Portsmouth's shimmering outdoor waterfront concert venue. Covered and lawn seating, easy parking, and a short walk to High Street make every night at the Pavilion special.

16 CRAWFORD CIRCLE  
PAVILIONCONCERTS.COM

## **PORTSMOUTH CULTURAL ARTS DISTRICT**

From colorful wall murals and sculptures to painted electrical boxes, Portsmouth features more than 20 pieces of public art on display throughout Olde Towne and the High Street Entertainment District.

PORTSMOUTHARTSDISTRICT.COM

## **LEMANS KARTING**

Test your skill on one of the largest & fastest hi-speed LeMans karting tracks in the country – real gas-powered racing on adult and junior tracks designed by racers for racers. Great for parties and unique business meetings, too!

2882 AIRLINE BOULEVARD  
[LEMANSKARTING.COM/PORTSMOUTH-VA](http://LEMANSKARTING.COM/PORTSMOUTH-VA)

## **RIVERS CASINO PORTSMOUTH**

Coming Soon: Catch all the non-stop gaming, dining and top-name entertainment action at the all-new Rivers Casino Portsmouth, conveniently located just off Interstate 264 at Victory Boulevard.

## **FESTIVALS & SPECIAL EVENTS**

Portsmouth comes alive with fun festivals and special events throughout the year. We'll see you out there!

**UMOJA FESTIVAL** | MAY

**SEAWALL MUSIC FESTIVAL** | JUNE

**SUNSET THURSDAYS** | JUNE–SEPT

**OKTOBERFEST** | SEPT–OCT

**SEAWALL ART SHOW** | AUG

**HOLIDAY MUSIC FESTIVAL** | DEC

**WINTER WONDERLAND** | DEC





## outdoors

### **GOLFING**

Portsmouth features two great ways to hit the links. Bide-a-Wee Golf Course is an 18-hole, par-72 Curtis Strange signature course featuring bent grass greens and challenging fairways lined with majestic pines, ponds and lakes. The Links at City Park offers a 9-hole course and a driving range. The Links also features an AFGL Certified "FootGolf" Course.

**BIDE-A-WEE GOLF COURSE**  
1 BIDE-A-WEE LANE

**THE LINKS AT CITY PARK**  
7 CPL J M WILLIAMS AVENUE

### **PORTSMOUTH CITY PARK**

Situated on the banks of the Elizabeth River, Portsmouth City Park features a 9-hole golf course, tennis courts, covered picnic areas, walking trails, fishing piers, a boat launch and a fun-filled playground. In the warmer months, take a ride around the park on the steam train, Pokey Smokey.

CPL J M WILLIAMS AVENUE  
PORTSMOUTHPARKS.COM



### **PARADISE CREEK NATURE PARK**

Hike, jog or kayak through the restored wetlands in this 40-acre urban nature park. An initiative of the Elizabeth River Project, Paradise Creek has over 2 miles of trails and a public, handicap-accessible kayak launch, along with endless opportunities to learn about the importance of a healthy river ecosystem.

1141 VICTORY BOULEVARD  
[ELIZABETHRIVER.ORG/PARADISECREEK](http://ELIZABETHRIVER.ORG/PARADISECREEK)

### **PORTSMOUTH SPLASH PARK**

Portsmouth's Splash Park is the coolest way to beat a hot summer day. It offers fun for kids of all ages, especially younger kids looking to play with all kinds of gadgets that spray, spill, splash and squirt.

900 ELM AVENUE

### **HOFFLER CREEK WILDLIFE PRESERVE**

The 142-acre preserve features 3 miles of nature trails, four separate habitats, a 32-acre lake, tidal creek kayaking and over 200 species of birds, including the American Bald Eagle. Decks and bird blinds overlook the lake, creek, and salt marsh. Kayak rentals, too!

4510 TWIN PINES ROAD  
[HOFFLERCREEK.ORG](http://HOFFLERCREEK.ORG)



# On The Water

## **THE ELIZABETH RIVER FERRY**

Ferries have been serving visitors to Portsmouth since 1636. Today's Elizabeth River Ferry transports people and bicyclists between here and Norfolk 7 days-a-week. Ferries board at both High Street Landing and North Landing in Olde Towne.

[GOHRT.COM/ROUTES/FERRY](http://GOHRT.COM/ROUTES/FERRY)

## **CARRIE B SHOWBOAT GROUP CHARTERS**

Sail the harbor with your crew aboard a replica 19th century Mississippi River Boat. Perfect for naval base tours, weddings and anniversaries, family reunions, unique corporate meetings, dockside events, parties and more!

[CARRIEB.COM](http://CARRIEB.COM)

# Marinas

Portsmouth welcomes boaters with several full-service marinas – most within easy walking distance of restaurants, shops and attractions. Full-service commercial marinas offer transient boat slips with shore power and water, dry storage, fuel, and ship stores for supplies. For members of the Freedom Boat Club worldwide, Portsmouth has its own chapter located at Tidewater Yacht Marina. If you're here for a short stay and don't require any services, free docking for boats up to 40 feet is permitted at High Street Landing. It's designed for day visitors but boaters are welcome overnight not to exceed 36 hours.

COMPLETE REGISTRATION FORM ONLINE:  
[PORTSVACATION.COM/VISITING-BY-BOAT](http://PORTSVACATION.COM/VISITING-BY-BOAT)



## Dining, Nightlife & Shops

Portsmouth is filled with so many great places to eat, drink, shop, and go different, we can't fit them all here!

FIND ALL THE DELICIOUS DETAILS AT  
[WWW.PORTSVACATION.COM/DINING](http://WWW.PORTSVACATION.COM/DINING).

## Accommodations

### **RENAISSANCE PORTSMOUTH-NORFOLK WATERFRONT HOTEL**

425 WATER ST, PORTSMOUTH, VA 23704  
(757) 673-3000  
[RENAISSANCEPORTSMOUTH.COM](http://RENAISSANCEPORTSMOUTH.COM)

### **QUALITY INN & SUITES OLDE TOWNE**

347 EFFINGHAM ST, PORTSMOUTH, VA 23704  
(757) 397-7788  
[CHOICEHOTELS.COM](http://CHOICEHOTELS.COM)

FOR A FULL LIST OF LODGING OPTIONS  
VISIT [PORTSVACATION.COM/WHERE-TO-STAY](http://PORTSVACATION.COM/WHERE-TO-STAY)

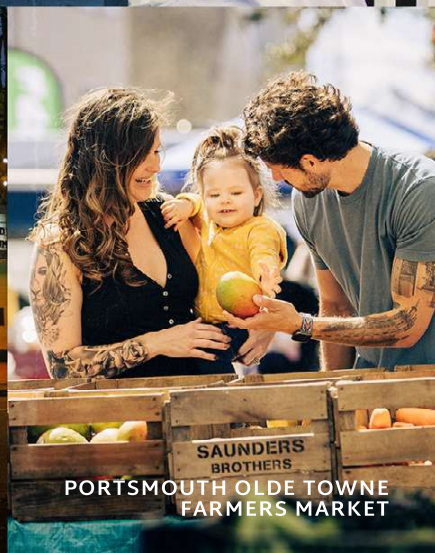




FISH & SLIPS MARINA RAW BAR & GRILL



COMMODORE THEATRE



PORTSMOUTH OLDE TOWNE FARMERS MARKET

**Go Different.**

PLAN YOUR VISIT TODAY

**PORTSMOUTH**  
VIRGINIA

FOR MORE DETAILS:  
[VISITPORTSVA.COM](http://VISITPORTSVA.COM)  
800-PORTS-VA